

MSA Optical Amplifier (Gain Block) Pre-Amplifier, Compact Booster Amplifier, Compact

Applications:

Long Haul and Metro
Single Channel and Narrowband Applications
Transmitter and Receiver Amplification

Features:

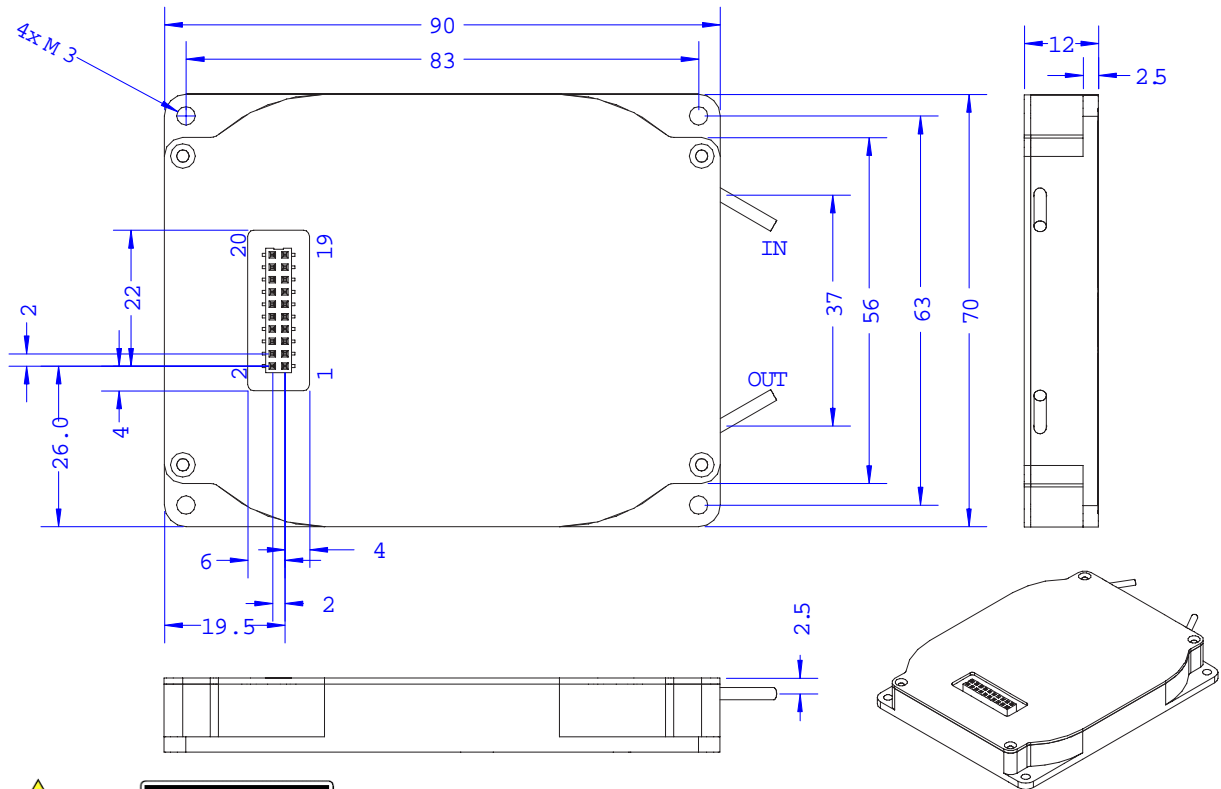
MSA Compatible Size
High Gain up to 30dB
Input and Output Monitor



Description:

Go!Foton's single channel C-band Optical Amplifier is a cost effective, compact, and flexible optical amplifier solution designed for a variety of applications within your network system or subsystems. The high gain profile and low noise figure make it ideal for use as Pre, Inline or Booster amplifier for metro and long haul applications.

Dimensions:



LASER APERTURE



INVISIBLE LASER RADIATION EMITTED FROM END OF FIBER OR CONNECTOR
Avoid exposure to beam
Class 3B Laser Product IEC-60825M 1993 Max. Output: 10 mW Wavelength: 1.5 μ m

Specifications:

Pre-Amplifier

Optical Specification	Parameter	Min.	Typ.	Max.
	Operating Wavelength (nm)	1529		1562
	Total Input Signal Power (dBm)	-30		-10
	Total Output Signal Power (dBm)		3	
	Signal Gain Range (dB)	13		30
	Noise Figure (dB)			6.0
	Polarization Dependent Gain (dB)			0.5
	Polarization Mode Dispersion (ps)			0.5

Electrical Connector	Pin	Description	Pin	Description
	1	Ground, input & output photodiodes	11	NC
	2	Input monitor cathode	12	NC
	3	Input monitor anode	13	NC
	4	Output monitor cathode	14	NC
	5	Output monitor anode	15	NC
	6	NC	16	NC
	7	Laser diode anode	17	Ground, Laser diode
	8	Laser diode anode	18	NC
	9	NC	19	Laser diode cathode
	10	NC	20	Laser diode cathode

Booster Amplifier

Optical Specification	Parameter	Min.	Typ.	Max.
	Operating Wavelength (nm)	1529		1562
	Total Input Signal Power (dBm)	-10		+4
	Total Output Signal Power (dBm)		17	
	Nominal Gain (dB)		20	
	Noise Figure (dB)			6.0
	Polarization Dependent Gain (dB)			0.5
	Polarization Mode Dispersion (ps)			0.5

Electrical Connector	Pin	Description	Pin	Description
	1	Ground, input & output photodiodes	11	Thermoelectric cooler, anode
	2	Input monitor cathode	12	Thermoelectric cooler, anode
	3	Input monitor anode	13	Thermoelectric cooler, anode
	4	Output monitor cathode	14	Thermoelectric cooler, cathode
	5	Output monitor anode	15	Thermoelectric cooler, cathode
	6	Thermister	16	Thermoelectric cooler, cathode
	7	Laser diode anode	17	Ground, Laser diode
	8	Laser diode anode	18	Thermister
	9	Pump monitor cathode	19	Laser diode cathode
	10	Pump monitor anode	20	Laser diode cathode

Environmental Specification	Parameter	Min.	Typ.	Max.
	Operating temperature (°C)	0		70
	Storage temperature (°C)	-40		+85
	Operating humidity (%RH)	5		95

Document # GF-S-MKT-EDGB-REV1-08-SEP